

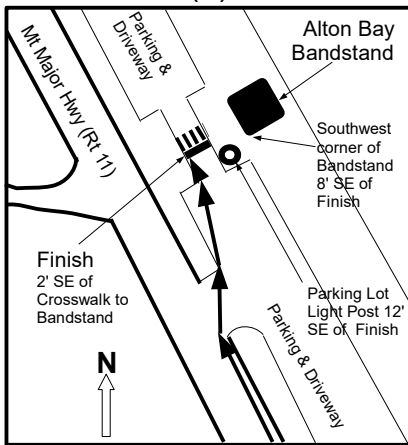
# Alton 5K Race

## Alton, New Hampshire

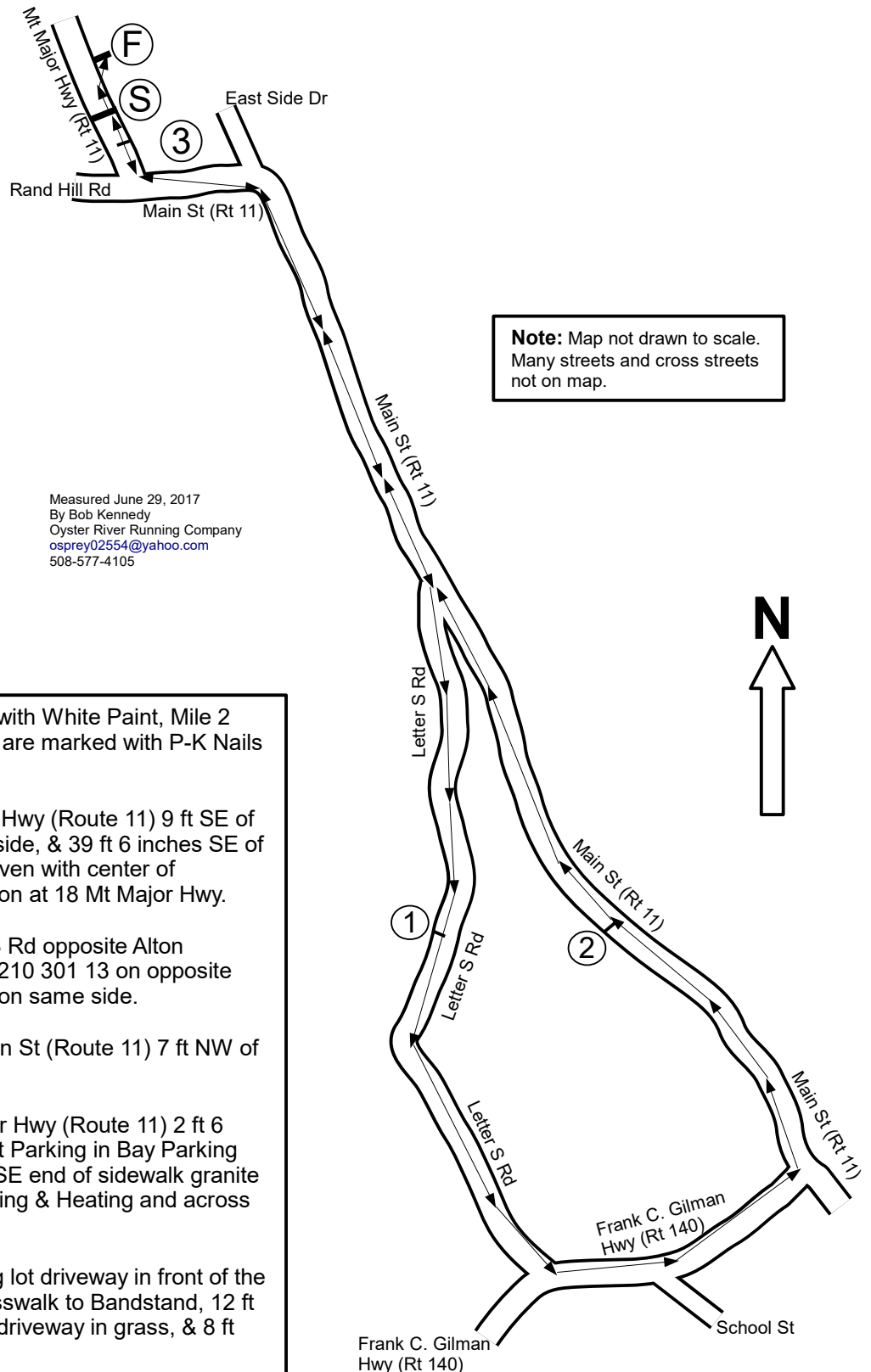
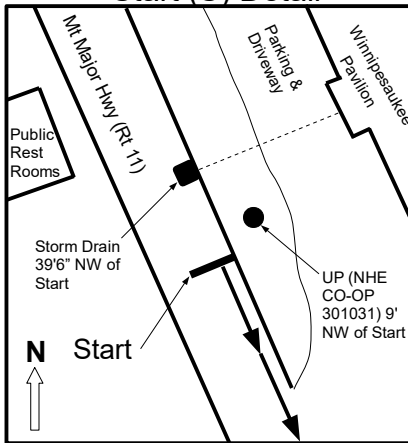


USATF Certificate NH17008BK  
Effective July 5, 2017 to December 31, 2027

### Finish (F) Detail



### Start (S) Detail



**Note:** Map not drawn to scale.  
Many streets and cross streets not on map.

Measured June 29, 2017  
By Bob Kennedy  
Oyster River Running Company  
osprey02554@yahoo.com  
508-577-4105

Start, Finish and Miles 1 & 3 marked with White Paint, Mile 2 marked with White & Yellow Paint, all are marked with P-K Nails (UP = Utility Pole).

**Start:** On northeast side of Mt Major Hwy (Route 11) 9 ft SE of UP (NHE CO-OP 30103 1) on same side, & 39 ft 6 inches SE of Storm Drain on same side, which is even with center of entrance to the Winnepesaukee Pavilion at 18 Mt Major Hwy.

**Mile 1:** On northwest side of Letter S Rd opposite Alton Highway Dept about 65 ft NE of UP 3210 301 13 on opposite side, and 42 ft NE of Fire Hydrant 79 on same side.

**Mile 2:** On the southwest side of Main St (Route 11) 7 ft NW of front door for 193 Main St.

**Mile 3:** On northeast side of Mt Major Hwy (Route 11) 2 ft 6 inches NW of "No Trailer or Overnight Parking in Bay Parking Lot" sign on same side, & 42' NW of SE end of sidewalk granite curb at entrance to Mahoney's Plumbing & Heating and across from Jay's Miniature Golf Course

**Finish:** On southwest side of parking lot driveway in front of the Alton Bay Bandstand, 2 ft SW of Crosswalk to Bandstand, 12 ft NW of Parking Lot Light Post across driveway in grass, & 8 ft NW of SW corner of Bandstand.